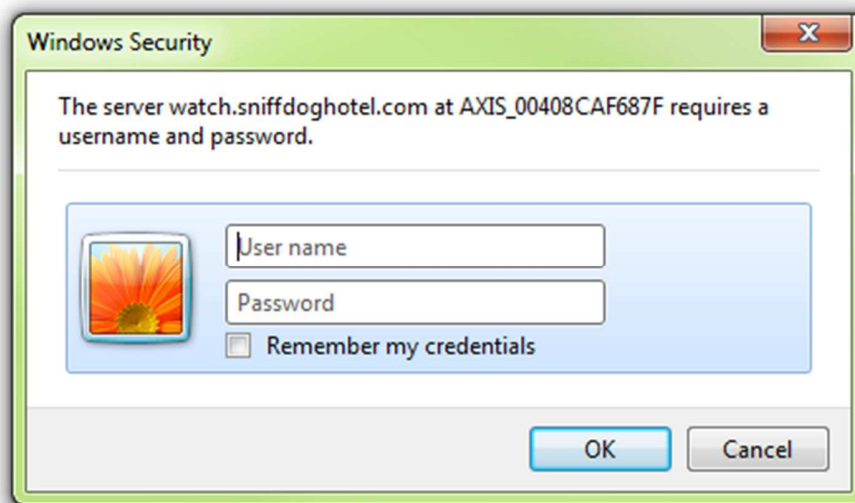




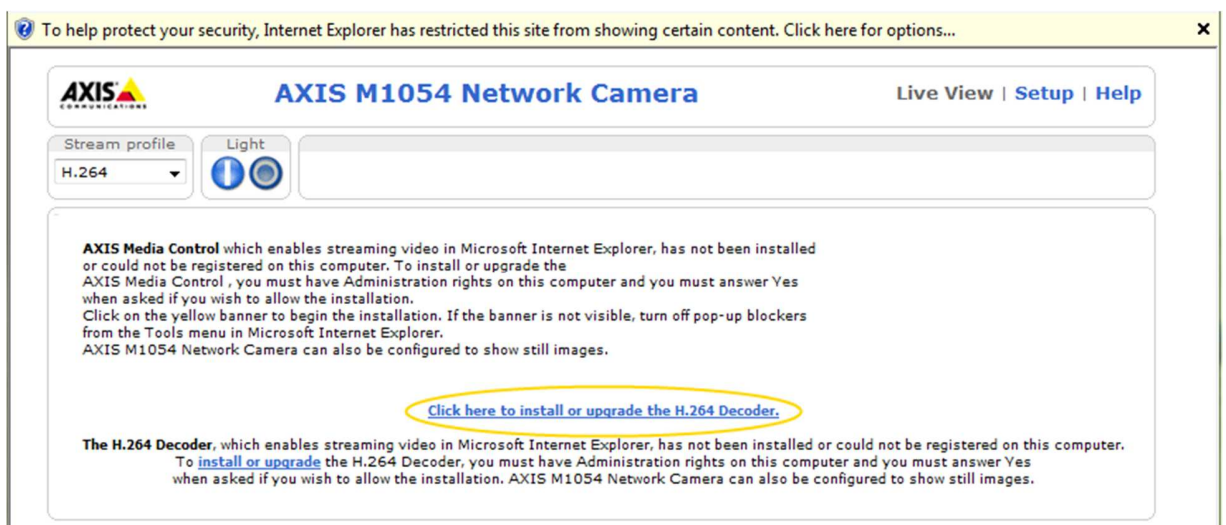
Viewing Sniff Dog Hotel Cameras using Internet Explorer

1. Navigate to <http://www.sniffdoghotel.com/webcam.html>.
2. Click on the link for the desired camera. If viewing an in-suite camera, you will be prompted for a username and password. You will be provided with this information upon check-in. The Dog Park camera will not prompt for credentials.

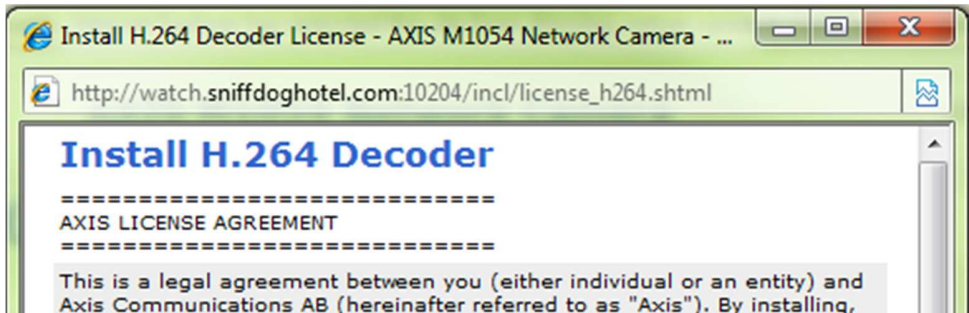


If this is the first time you have viewed the camera feed on this computer, you will be prompted to install a few items.

3. Install the H.264 Decoder. Click here to install it:



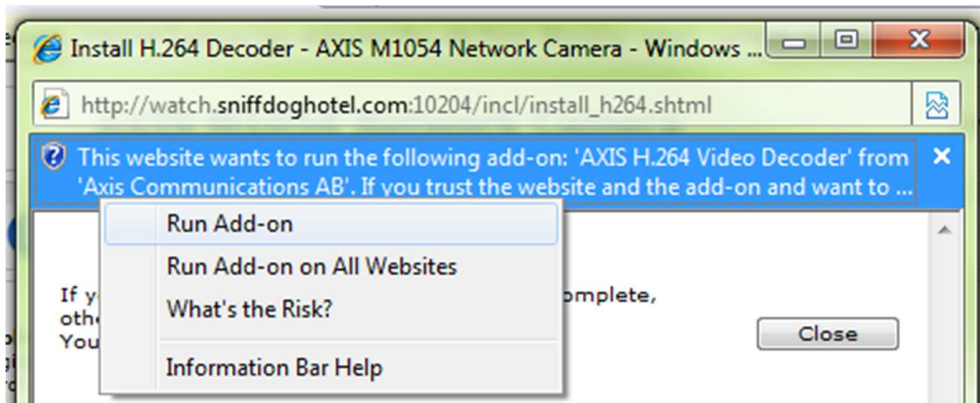
4. This window will appear:



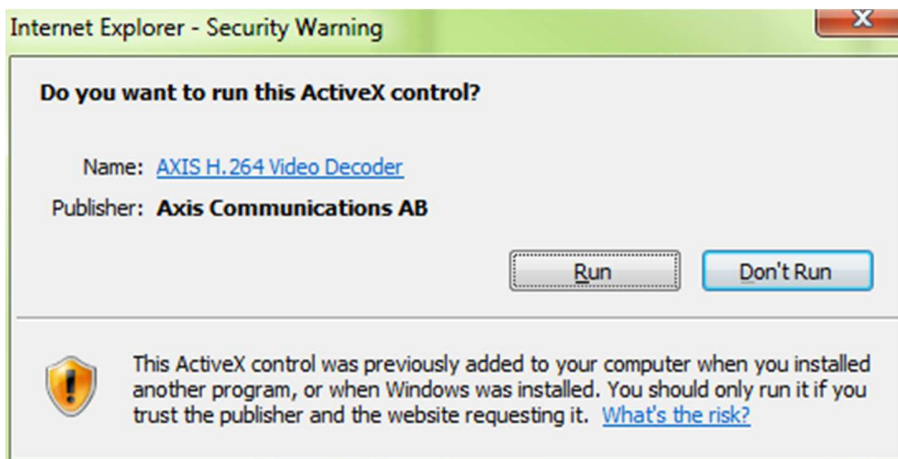
5. Scroll to the bottom, choose "I accept the License agreement", and click OK.



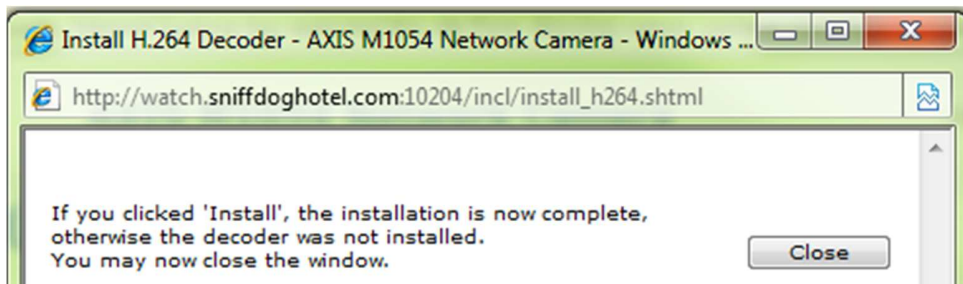
6. Click the yellow bar that appears at the top of the window, and choose "Run Add-on":



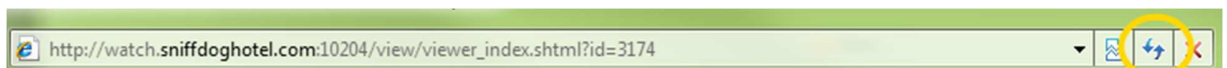
7. Choose Run:



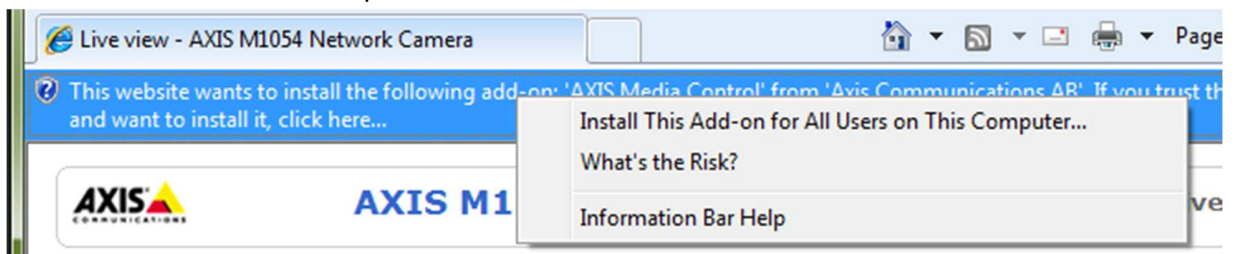
8. Click Close:



9. Reload the main page by clicking "Refresh":



10. Click the yellow bar that appears at the top of the window, and choose "Install This Add-on for All Users on This Computer":



11. If prompted with "Do you want to allow this program to make changes to your computer, choose "Yes".
12. Wait 5-10 seconds while the page reloads and the video stream starts up. You should now be able to see live, streaming video. If you have problems viewing the video stream, please contact us at 503-208-2366.